

**Pacific Paradise, Timari Street  
Streetscape Revitalisation Project**

Project number: P-B3895

**Pedestrian crossing and road construction works  
Including temporary partial road closure, Timari Street  
(weather permitting)****Zone C works commencing –  
Monday 12 February 2018**

**Zone C** construction will commence on **Monday 12 February** and continue through to **late - March 2018**.

Works will include the demolition of existing footpaths, the removal of some vegetation (to accommodate the new pedestrian crossing and street furniture) and the construction of new footpaths, garden beds and a pedestrian crossing.

Pedestrian access will remain to all businesses during standard trading hours.

Construction of the northern Timari Street pedestrian crossing (adjacent to Mischief Hair and Beauty and the Northshore Tavern) and associated roadworks will begin on **Monday 5 March** and continue through to **Monday 19 March 2018** (weather permitting).

To construct this crossing safely and efficiently it is necessary to temporarily close a section of Timari Street to vehicle traffic, namely the northern access from Menzies Drive. Pedestrian access to Timari Street will remain available. Vehicle access to Timari Street will be via the southern entry off David Low Way and the service road.

The project team will ensure the maximum number of car parking bays remains available as is safe and practical to do so.

Please refer to the **diagrams on page 2 and 3 of this notification** to see the Zone C construction area, pedestrian crossing location and details of the temporary road closure and alternative vehicle access points.

**Timari Street (northern entry)  
temporary road closure**

The temporary road closure will take place from:

**5am Monday 5 March – 7am Monday 19 March 2018**  
(weather and site conditions permitting).

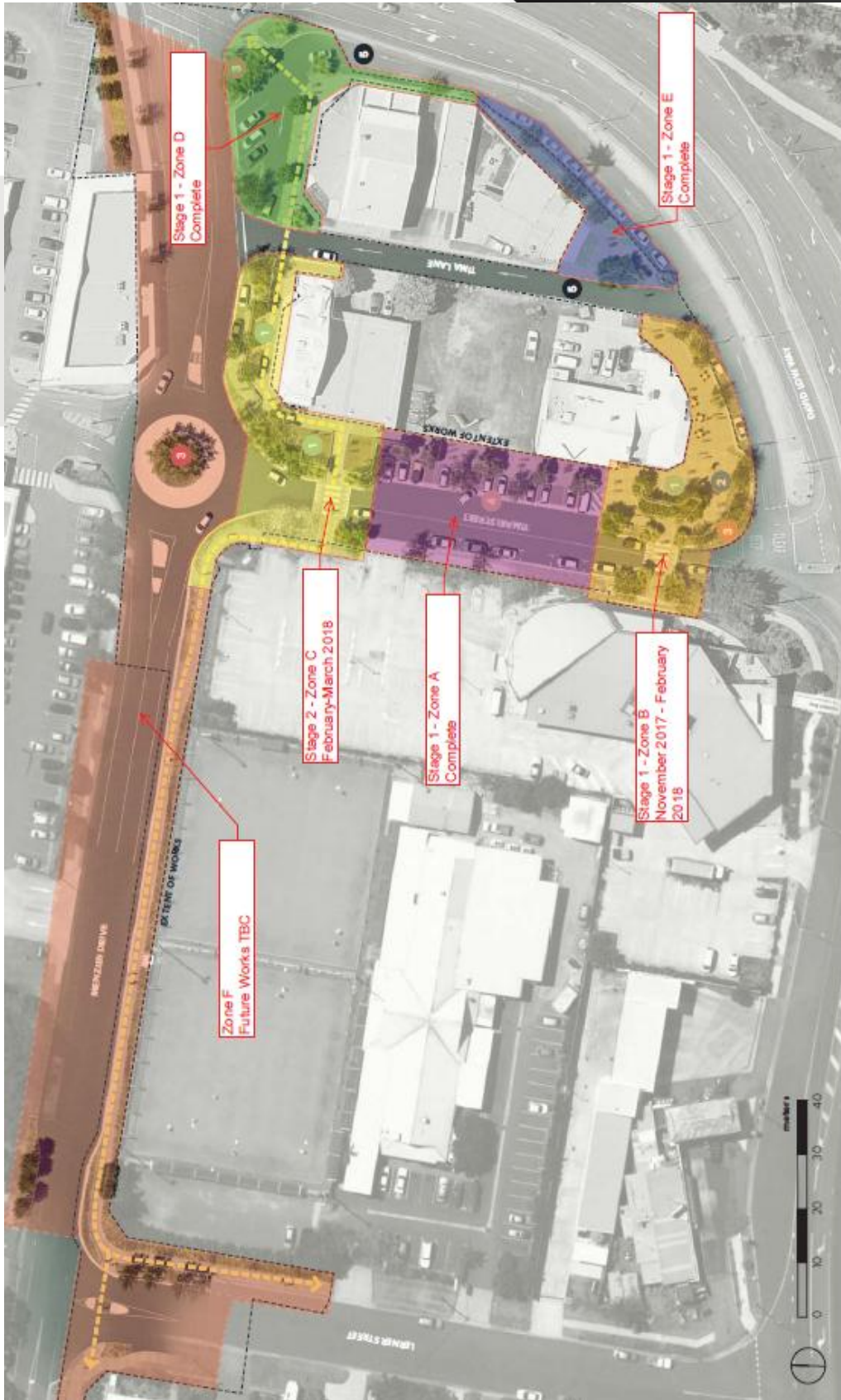
Detours and signage will be in place to help communicate the temporary changes to motorists.

**Thank you for your patience**

We would like to thank the community, especially local businesses for your patience as we make these major improvements to the Timari Street precinct.

**Contact the project team**

For further information visit the website at:  
[www.sunshinecoast.qld.gov.au](http://www.sunshinecoast.qld.gov.au) or contact the  
Project Officer, Greg Hill via the details below.



**CAR PARK NUMBERS**  
Existing Car Parks = 42  
Proposed Car Parks = 47

One-way traffic through Service Road and Thina Lane  
Pedestrian Pathway between David Low & Lorner Street

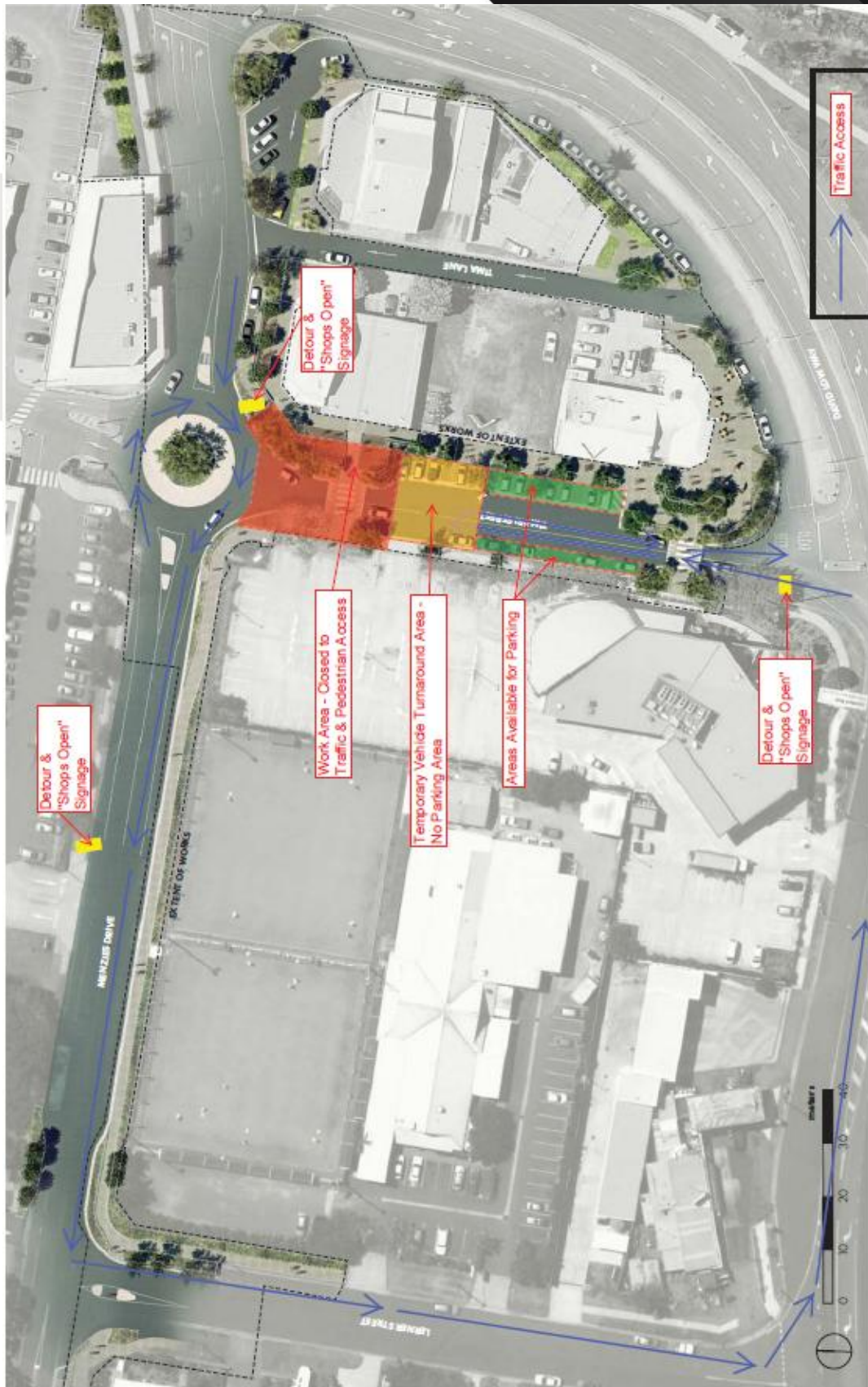
Feature "Gateway" Landscape  
Formalised Car Parking

1 Activation Area  
2 Public Artwork

**PACIFIC PARADISE TOWN CENTRE**  
Landscape Plan - Final Streetscape - 23 January 2017

All information contained in this communication is accurate at the time of distribution however works and dates are subject to change due to circumstances outside of Sunshine Coast Council's control.

[www.sunshinecoast.qld.gov.au](http://www.sunshinecoast.qld.gov.au)  
[mail@sunshinecoast.qld.gov.au](mailto:mail@sunshinecoast.qld.gov.au)  
 T 07 5475 7272 F 07 5475 7277  
 Locked Bag 72 Sunshine Coast Mail Centre Qld 4560



All information contained in this communication is accurate at the time of distribution however works and dates are subject to change due to circumstances outside of Sunshine Coast Council's control.

[www.sunshinecoast.qld.gov.au](http://www.sunshinecoast.qld.gov.au)  
[mail@sunshinecoast.qld.gov.au](mailto:mail@sunshinecoast.qld.gov.au)  
 T 07 5475 7272 F 07 5475 7277  
 Locked Bag 72 Sunshine Coast Mail Centre Qld 4560