

**Pacific Paradise, Timari Street
Streetscape Revitalisation Project**

Project number: P-B3895

REVISED dates for temporary partial road closure**Northern entry, Timari Street (weather permitting)****Timari Street (northern entry) -
temporary partial road closure**

As part of Zone C works, a new, raised pedestrian crossing is being constructed on the northern Timari Street (adjacent to Mischief Hair and Beauty and the Northshore Tavern). New kerbing and roadworks are also planned.

To conduct these works safely and efficiently it is necessary to temporarily close a section of Timari Street to vehicle traffic, namely the northern access from Menzies Drive.

Pedestrian access to Timari Street will remain available. Vehicle access to Timari Street will be via the southern entry off David Low Way (and the service road.)

The project team will ensure the maximum number of car parking bays remains available as is safe and practical to do so.

Please refer to the diagrams on page 2 and 3 of this notification to see the Zone C construction area, pedestrian crossing location and details of the temporary road closure and alternative vehicle access points.

**Revised dates and times for
temporary road closure**

Due to recent heavy rains delaying some preparatory works, the temporary road closure will now take place from:

5am Monday 12 March – 7am Monday 26 March 2018
(weather and site conditions permitting).

Detours and signage will be in place to help communicate the temporary changes to motorists.

Construction will continue to take place in other areas throughout the whole of March.

Thank you for your patience

We would like to thank the community, especially local businesses for your patience as we make these major improvements to the Timari Street precinct.

Contact the project team

For further information visit the website at:
www.sunshinecoast.qld.gov.au or contact the
Project Officer, Greg Hill via the details below.



CAR PARK NUMBERS
Existing Car Parks = 42
Proposed Car Parks = 47

One-way traffic through Service Road and Time Lane
Pedestrian Pathway between David Low & Lerner Street

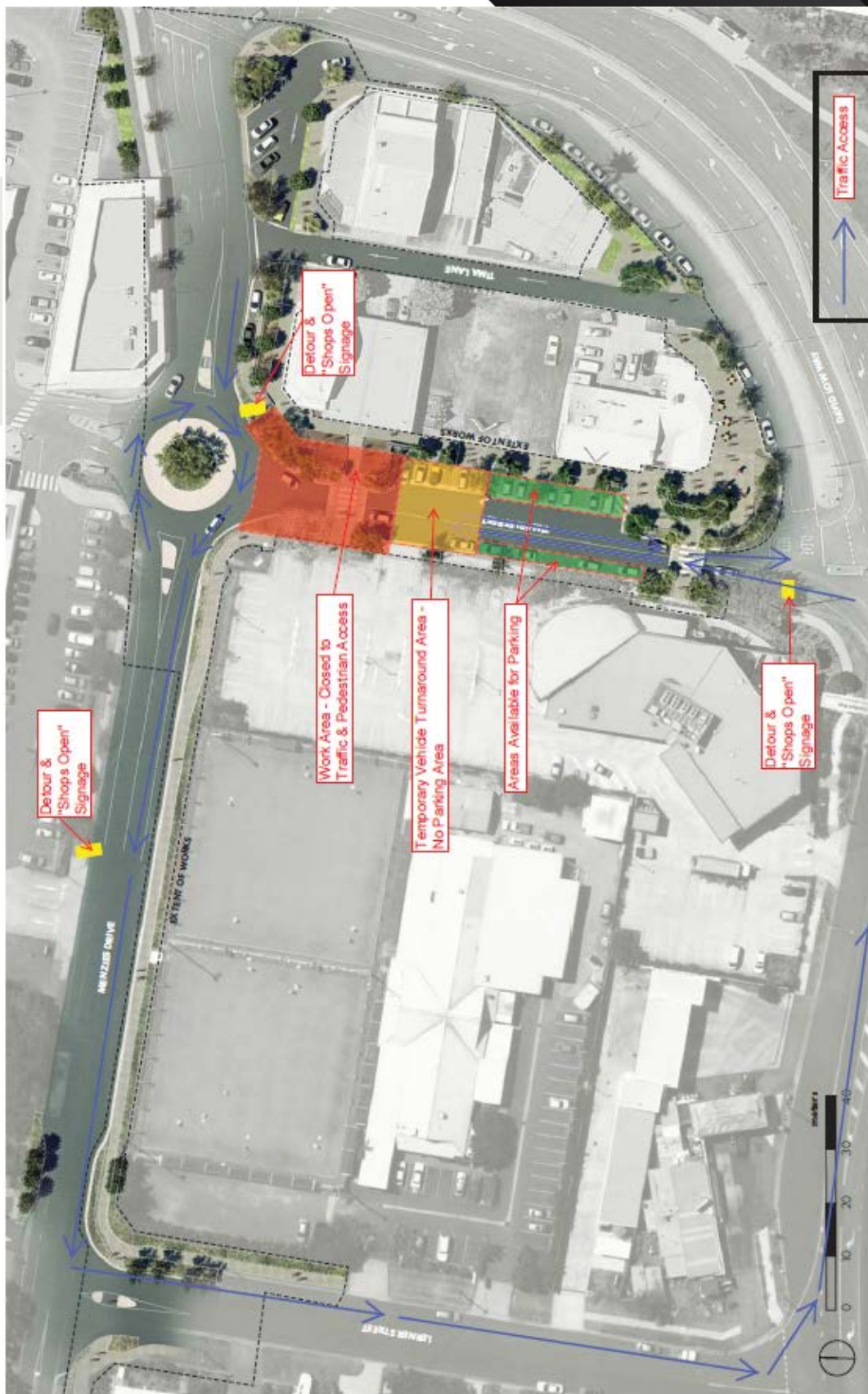
1 Activation Area
2 Public Artwork
3 Feature "Gateway" Landscape
4 Formalised Car Parking

PACIFIC PARADISE TOWN CENTRE
Landscape Plan - Final Streetscape - 23 January 2017



All information contained in this communication is accurate at the time of distribution however works and dates are subject to change due to circumstances outside of Sunshine Coast Council's control.

www.sunshinecoast.qld.gov.au
mail@sunshinecoast.qld.gov.au
 T 07 5475 7272 F 07 5475 7277
 Locked Bag 72 Sunshine Coast Mail Centre Qld 4560



All information contained in this communication is accurate at the time of distribution however works and dates are subject to change due to circumstances outside of Sunshine Coast Council's control.

www.sunshinecoast.qld.gov.au
mail@sunshinecoast.qld.gov.au
 T 07 5475 7272 F 07 5475 7277
 Locked Bag 72 Sunshine Coast Mail Centre Qld 4560